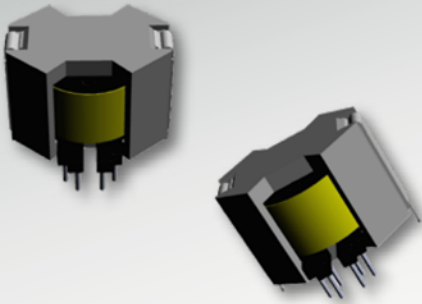


# RM8

## 12-Terminal, THT, Vertical



### Characteristics

- Through-hole
- Core direction: vertical
- Functional insulation

### Applications

- Lighting
- Metering
- DC/DC converter
- Industrial controls
- White goods
- Telecom
- CMC
- PFC

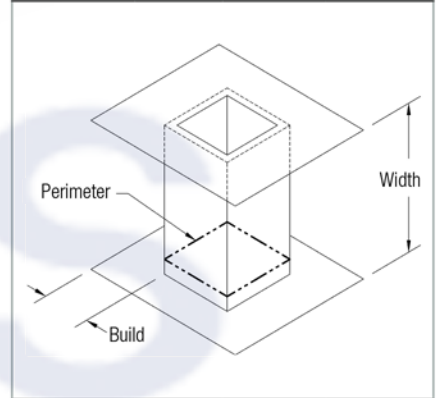
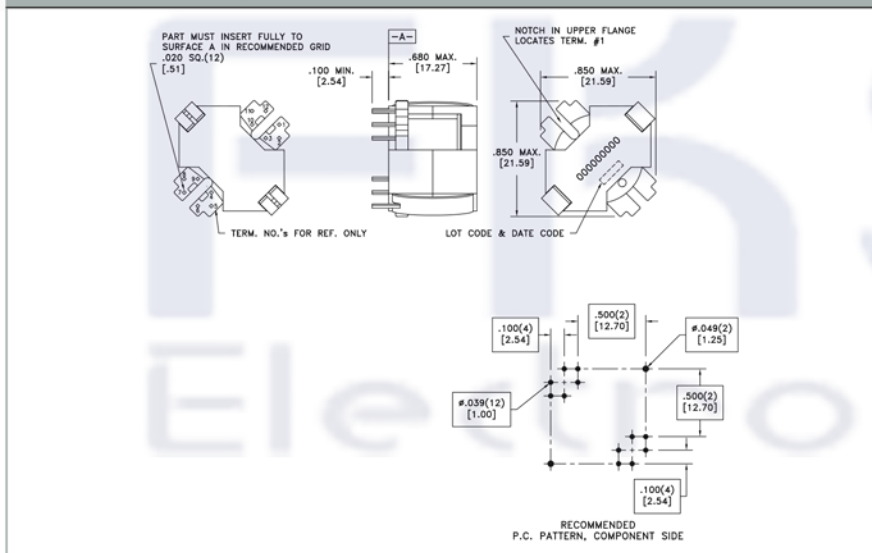
### Core Data

Core Part Number	Area ( $A_c$ ) (mm <sup>2</sup> )	Path Length ( $L_w$ ) (mm)	Volume ( $V_c$ ) (mm <sup>3</sup> )
150-2623	52.00	35.10	1825.20

### Bobbin Winding Area

Bobbin Part Number	Width (mm)	Build (mm)	Perimeter (mm)
070-2255	9.19	3.43	30.89

### Dimensions & Footprint



### Models

- A** Altium Library
- E** Eagle Library
- S** STEP 3D Model
- I** IGS 3D Model
- W** WRL 3D Model

### Estimated Maximum Power Level

